



## TECHNICAL DATA SHEET



### BIOLOGICAL INOCULANT POLVO HUMECTABLE (WP)

*Tango® is an biological inoculant formulated based on five beneficial bacteria: Bacillus subtilis, Bacillus licheniformis, Bacillus megaterium, Pseudomonas fluorescens and Azotobacter sp.*

*Tango® stimulates the growth and development of crops. Helps to the development of roots, leaves, flower buds, improve fruit size and yield per hectare; helps to fix atmospheric nitrogen, assimilates mineral nutrients and efficient taking of water by the plant, stimulates germination, provides root health, increases the root volume and therefore contributes to a good anchorage to the soil.*

#### PERCENTAGE COMPOSITION

##### Active ingredients:

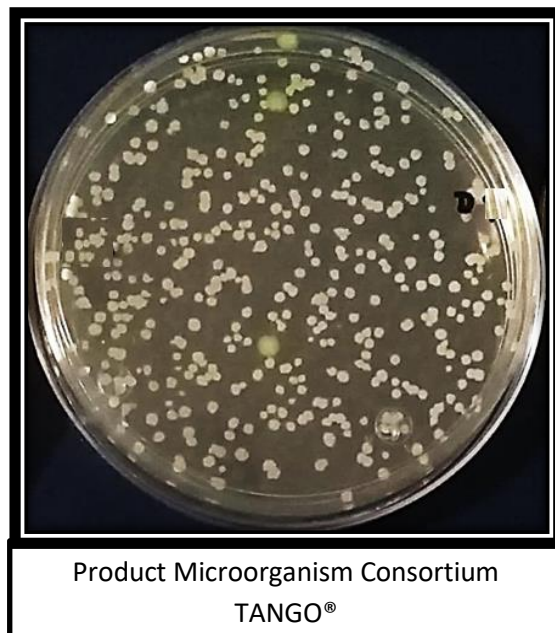
*Bacillus subtilis, B. megaterium, B. licheniformis, Pseudomonas fluorescens & Azotobacter sp. ....6.0%*  
(With a concentration of  $2.1 \times 10^9$  CFU/1000g)

#### PACKING

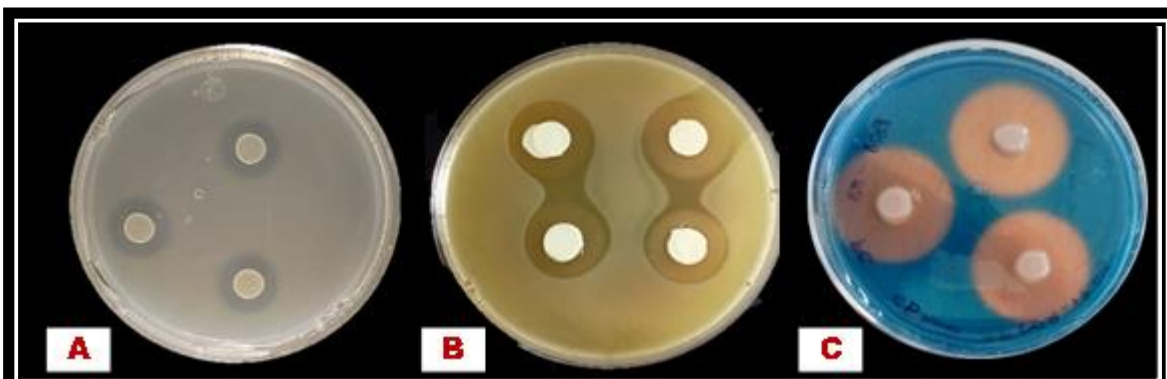
*Tango® presentation: 1 Kg and 3x1 Kg, wettable powder.*

#### ADVANTAGES:

- ✓ Easy application and handling
- ✓ Green technology - OMRI Listed®
- ✓ High quality standard




Product Microorganism Consortium  
TANGO®



Among the mechanisms of action of PGPR contained in TANGO<sup>®</sup> are the following:  
A) Phosphorus solubilization, B) Indoleacetic acid production and C) Production of siderophores

#### AUTHORIZED DOSE AND CROPS:

AUTHORIZED CROPS	DOSE	REMARKS
<p><b><i>Solanaceae:</i></b> Pepper, tomato, tobacco, potato.</p> <p><b><i>Cucurbitaceae:</i></b> Melon, cucumber, watermelon, summer squash.</p> <p><b><i>Alliaceae:</i></b> Onion, chives.</p> <p><b><i>Amaryllidaceae:</i></b> Garlic</p> <p><b><i>Apiaceae:</i></b> Celery</p> <p><b><i>Brassicaceae:</i></b> Cauliflower, cabbage, broccoli</p> <p><b><i>Chenopodiaceae:</i></b> Beet, chard, spinach</p> <p><b><i>Compositae:</i></b> Lettuce</p> <p><b><i>Liliaceae:</i></b> Asparagus</p> <p><b><i>Umbelliferae:</i></b> Carrot</p>	1 Kg/ha	<p>Make three applications at intervals of 20 days, by drip irrigation during vegetative development.</p> 



### PRODUCT PREPARATION

Break the upper left corner with scissors (never with your mouth), trying not to come into direct contact with the product. In the application equipment, fill the tank up to  $\frac{3}{4}$  of its capacity, then add **Tango®** and finish filling with water.

It is applied in drench with enough amount of water. Keep in constant stirring.

Apply it immediately after preparing the mixture.

### CONSIDERATIONS

Apply **Tango®** in favorable weather conditions, not during hours of maximum insolation. Do not apply if rain is forecast within 4 hours after application. Do not apply with wind speeds greater than 10 km/hour. Preferably apply in the morning or evening.

### COMPATIBILIDAD

Is not recommended **Tango®** in tank mixture.

### PHYTOTOXICITY

**Tango®** is not phytotoxic to the indicated crops here, if applied according to label recommendations.

---

### MANUFACTURER AND REGISTRY HOLDER

Química Agronómica de México, S. de R.L. de C.V.  
Calle 18 No. 20501, Parque Industrial Impulso, C.P. 31183  
Chihuahua, Chihuahua, México  
Tel. +52 614 483 9000

